



CASE STUDY

Kiaora Lands Shopping Centre

New Construction

Double Bay, NSW, Australia

OWNER

Woollahra Council,
Woolworths

CONTRACTOR

Ganellen

DISTRIBUTOR

KRYFIX



PRODUCTS USED IN APPLICATION

Krystol Internal Membrane (KIM) admixture, Hyperseal BR Waterstops

BACKGROUND

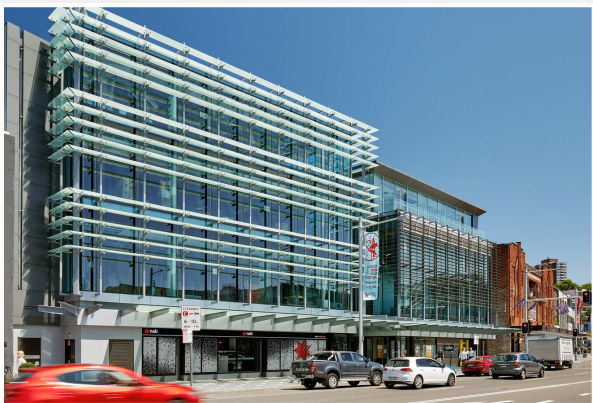
Construction of a new integrated shopping centre and council library at Double Bay, in Sydney's eastern suburbs, was a joint project for Woollahra Council & Woolworths completed by Ganellen. This \$60m major project included re-development of Woolworths, 20 new retail stores, commercial office space, council library, public plaza & 442-space carpark.

KRYFIX provided Krystol Internal Membrane (KIM) and Hyperseal BR waterstops to this project.

SOLUTION

Krystol Internal Membrane (KIM) concrete admixture was applied to the suspended carpark slabs. Hyperseal BR waterstops were applied to the construction joints.

Krystol Internal Membrane (KIM) is a hydrophilic crystalline admixture used to create permanently waterproof concrete. It is used for the treatment of concrete and concrete products to protect against water intrusion, leakage, cracking, chemical attack, and corrosion of reinforcing steel. Hyperseal BR waterstops are a high performance hydrophilic butyl rubber waterstop, which swell to form a long-lasting water-tight compression seal.




INFORMATION

For more information on KRYFIX products, please visit our website:



CONTACT

 02 9524 6688

 Engs@kryfix.com.au

