



CASE STUDY

Kingsford Substation

New Construction
Kingsford, NSW, Australia

OWNER

Energy Australia

CONTRACTOR

Hyder Consulting, DeMartin
& Gasparini Pty Ltd

DISTRIBUTOR

KRYFIX



PRODUCTS USED IN APPLICATION

Krystol Internal Membrane (KIM) Admixture, Krystol Bari-Cote.

BACKGROUND

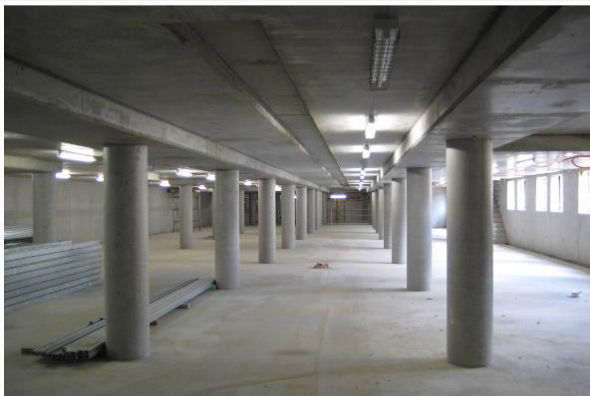
Construction of a new major zone substation at Kingsford, in Sydney's eastern suburbs, was completed by Hyder Consulting and DeMartin and Gasparini for Energy Australia. This \$41m major project included construction of new substation building plus installation of new underground cables to connect the substation onto the existing electricity network as part of a major network upgrade. This new major or 'zone' substation will initially serve about 18,800 homes and business in Kingsford and 14 other surrounding suburbs.

KRYFIX provided Krystol Internal Membrane (KIM) concrete admixture and Krystol Baricote to this project.

SOLUTION

Krystol Internal Membrane (KIM) concrete admixture was applied to the lower cable & connecting cable pits, basement walls, transformer pits and oil containment pits. Baricote was used to fill tie-bolt holes.

Krystol Internal Membrane (KIM) is a Krystol Internal Membrane (KIM) is a hydrophilic crystalline admixture used to create permanently waterproof concrete. It is used for the treatment of concrete and concrete products to protect against water intrusion, leakage, cracking, chemical attack, and corrosion of reinforcing steel. Baricote is a fast-setting waterproof grout that is specially designed to repair leaking cracks, holes and joints in concrete.





INFORMATION

For more information on KRYFIX products, please visit our website:



CONTACT

 02 9524 6688

 Enqs@kryfix.com.au

