



# CASE STUDY

## Sydney International Airport Multi Storey Car Park

New Construction

Mascot (Sydney), NSW, Australia (2012)

### OWNER

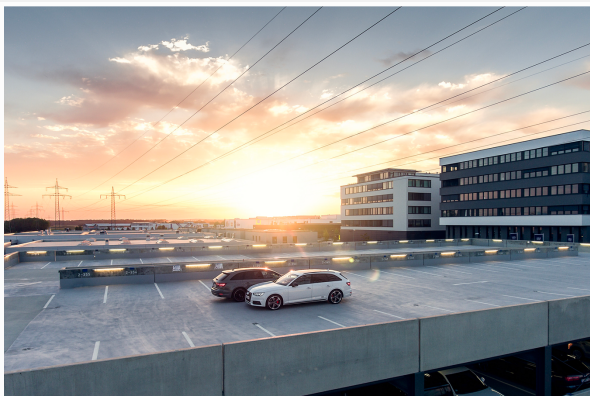
Sydney Airport  
Corporation Limited  
(SACL)

### CONTRACTOR

Abigroup

### DISTRIBUTOR

KRYFIX



### PRODUCTS USED IN APPLICATION

Krystol Internal Membrane (KIM) Admixture

### BACKGROUND

Construction of the new \$45m Sydney International Airport multi-storey carpark in Mascot (Sydney), was completed in 2012 by Abigroup for Sydney Airport Corporation Limited (SACL).

The new facility will provide an additional 2,300+ parking spaces to meet the growing demand from passengers for convenient and undercover parking. There are now approximately 6,150 parking spaces available at the International Terminal.

Level 8 was left completely exposed with no shelter, and needed a solution which could not only provide protection against the elements, but would also not wear from continual vehicle traffic.

### SOLUTION

Krystol Internal Membrane (KIM) was utilised in all slabs on Level 8 of this multi storey terminal carpark, totalling 2,800m<sup>3</sup>.


Krystol Internal Membrane (KIM) is a chemical admixture used for the treatment of concrete and concrete products to protect against water intrusion, leakage, cracking, chemical attack, and corrosion of reinforcing steel. KIM has the advantage of being a self-sealing system that transforms concrete into a powerful waterproof barrier.


### INFORMATION

For more information on KRYFIX products, please visit our website:



### CONTACT

 02 9524 6688

 [Enqs@kryfix.com.au](mailto:Enqs@kryfix.com.au)

