



CASE STUDY

Westfield Miranda

New Construction & Refurbishment (2014)

Miranda (Sydney), NSW, Australia

OWNER

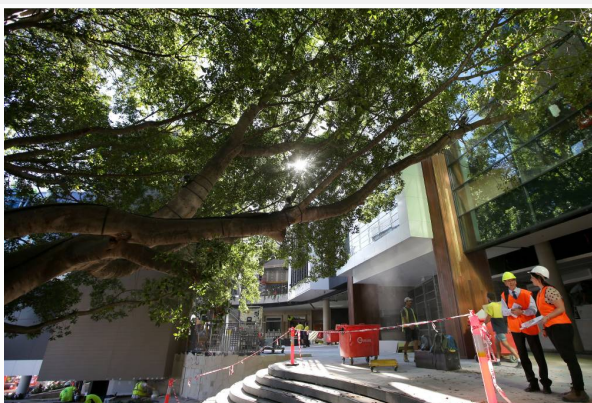
Scentre Group
(Westfield)

CONTRACTOR

Westfield Design & Construct

DISTRIBUTOR

KRYFIX



PRODUCTS USED IN APPLICATION

Krystol Internal Membrane (KIM), Hyperseal BR Waterstop

BACKGROUND

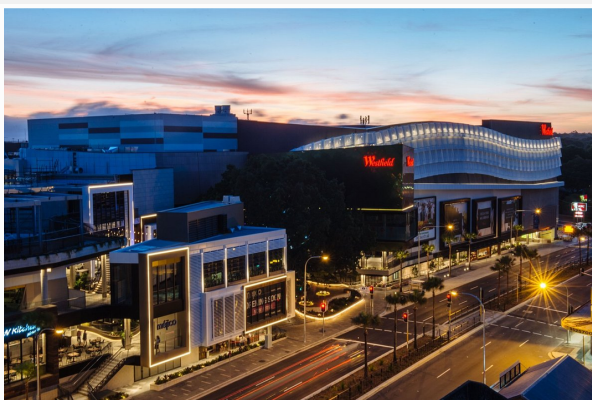
Located at Miranda in Sydney's southern suburbs, this large scale re-development was designed to provide a new retail, outdoor dining and entertainment precinct as well as refurbishment to the existing buildings. It was completed by Westfield Design and Construct Contractors for Scentre Group owned by Westfield Group.

KRYFIX provided Krystol Internal Membrane (KIM) concrete admixture and Hyperseal BR to this project.

SOLUTION

Krystol Internal Membrane (KIM) is a chemical admixture used for the treatment of concrete & concrete products to protect against water intrusion, leakage, cracking, chemical attack, & corrosion of reinforcing steel. KIM has the advantage of being a self-sealing system that transforms concrete into a powerful waterproof barrier. KIM was applied to the basement area of this development.

Hyperseal BR is a high performance, hydrophilic butyl rubber waterstop, which swells to form a long-lasting water-tight compression seal. Hyperseal BR was applied to the lift pits of this project.




INFORMATION

For more information on KRYFIX products, please visit our website:



CONTACT

 02 9524 6688

 Enqs@kryfix.com.au

