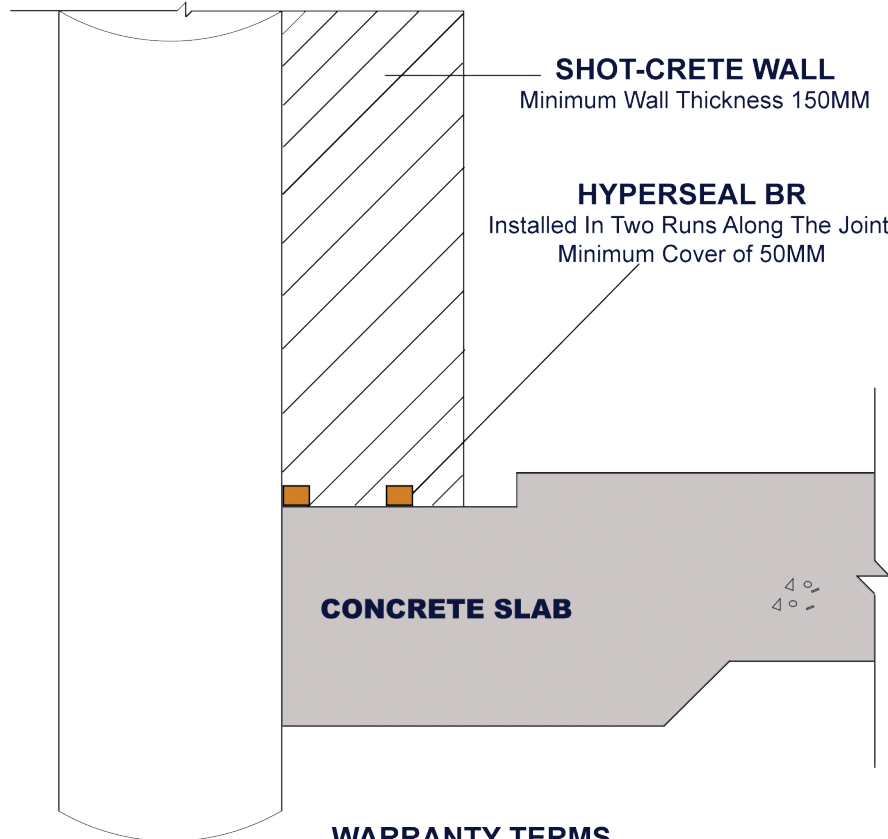




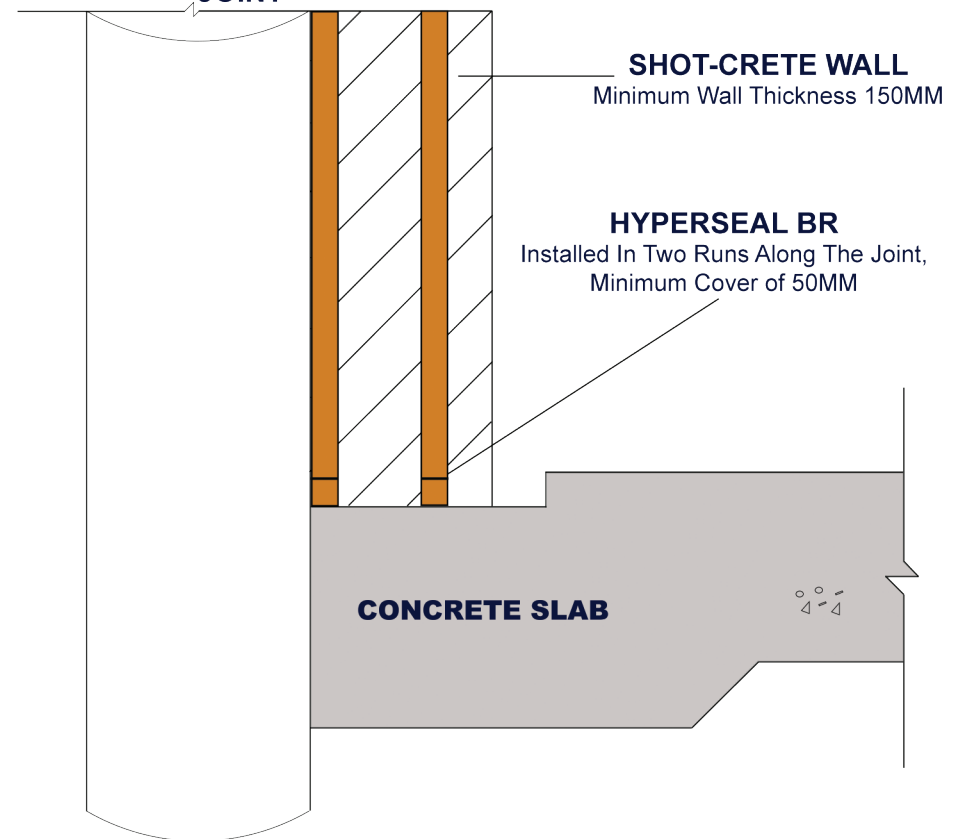
PROACTIVE SOLUTIONS

# CROSS SECTION/CROSS SECTION WITH VERTICAL JOINT

CROSS SECTION



CROSS SECTION WITH VERTICAL JOINT



## WARRANTY TERMS

Concrete Base Slab & Shot-Crete Walls To Contain Krystol Internal Membrane (KIM) Waterproofing Admixture - Warranty Specified 25 Years. Concrete Construction Joints To Have Two Runs Of Hyperseal BR Waterstop - Warranty Specified 10 Years.

Not To Scale

Please Note: All Information Expressed In This Document Is General & Should Be Consulted By KRYFIX On A Project By Project Basis To Ensure The Advice Is Correct

