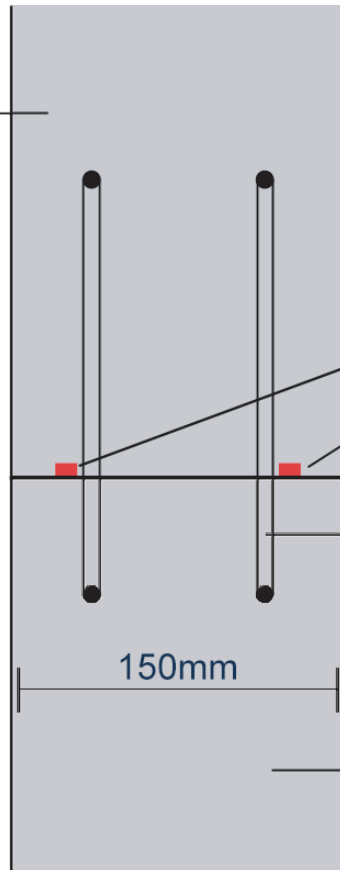




PROACTIVE SOLUTIONS

SHOTCRETE WALL JOINT, VERTICAL - HORIZONTAL JOINT

Shotcrete Wall
Pour ②



Hyperstop DB2519 Installed In
Two Runs

Reinforcement

150mm

Shotcrete Wall Pour ①

NOTE: The Joint Must Be Clean, Flat & Finished With A Trowel To Be Able To Accept Waterstop, Concrete Dags Must Be Removed By Others First.

Not To Scale

Please Note: All Information Expressed In This Document Is General & Should Be Consulted By KRYFIX On A Project By Project Basis To Ensure The Advice Is Correct



WWW.KRYFIX.COM.AU



1800 425 349



2/35 MANGROVE LANE,
TAREN POINT NSW 2229