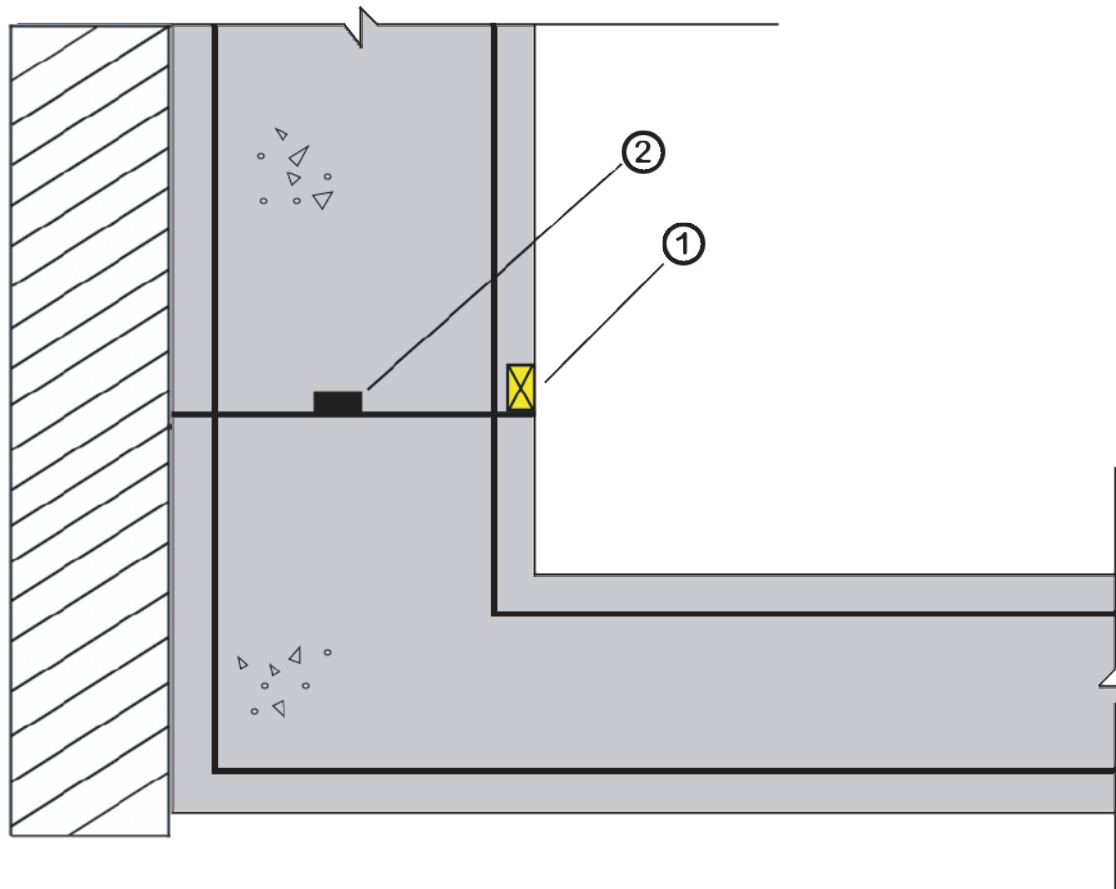




PROACTIVE SOLUTIONS

WATERSTOP WALL JOINT BLOCKOUT



- ① Formed rebate approximately 25mm X 30mm, to be later filled with Bari-Cote waterproof grout.
- ② Hyperseal BR

Not To Scale

Please Note: All Information Expressed In This Document Is General & Should Be Consulted By KRYFIX On A Project By Project Basis To Ensure The Advice Is Correct

